



BUILDING CONSULTANCY

PROJECT MONITORING

Vax Limited - Stonebridge Cross, Droitwich

210,000 sq ft Logistics Warehouse

20,000 sq ft Office Accommodation

£8 million project value

Harris Lamb Building Consultancy have successfully completed Project monitoring the Design and Construction of a new logistics facilities for UK distribution in Droitwich, Worcester, which facilitated the relocation of two existing distribution facilities into a purpose built unit to accommodate current requirements and expansion and provision. The development included a base build premises and fit outs of the warehouse and offices to accommodate the clients centre requirements.

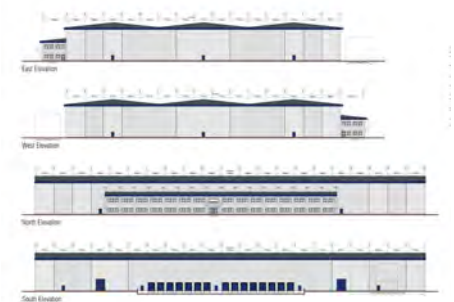
Our experienced team of Building Surveyors worked closely with the client to provide advice and input into requirements for the premises forming a base reference document.

We advised and developed on behalf of the client, a specification for the fit out requirements that was issued to the developer to form a full turn key build with ongoing Monitoring for the Design, Construction and Financial Expenditure on the project to ensure the building met the clients needs and expectations through to completion.

Building Consultancy Services

Included:-

- ✔ Feasibility and requirements advice
- ✔ Input into the legal agreement and lease
- ✔ Negotiation of fee basis with developers
- ✔ Oversee tender process
- ✔ Review at Design Process
- ✔ Monitoring of works during construction phase
- ✔ Agree final accounts for works



To learn more on how our Building Consultancy can support your property requirements contact; Paul Wells: paul.wells@harrislamb.com

Call us on 0121 455 9455

Or visit us at www.harrislamb.com

harrislamb
PROPERTY CONSULTANCY